

EP7A Project
WS1 – Workshop

Understanding the role and the functions of
Transport Authorities throughout Europe

Feedback from the EP7A Position survey.

Tommaso BONINO, SRM

Aberdeen

May 29th – 30th, 2012

Goal n. 1: taking a picture of the Consortium partners.

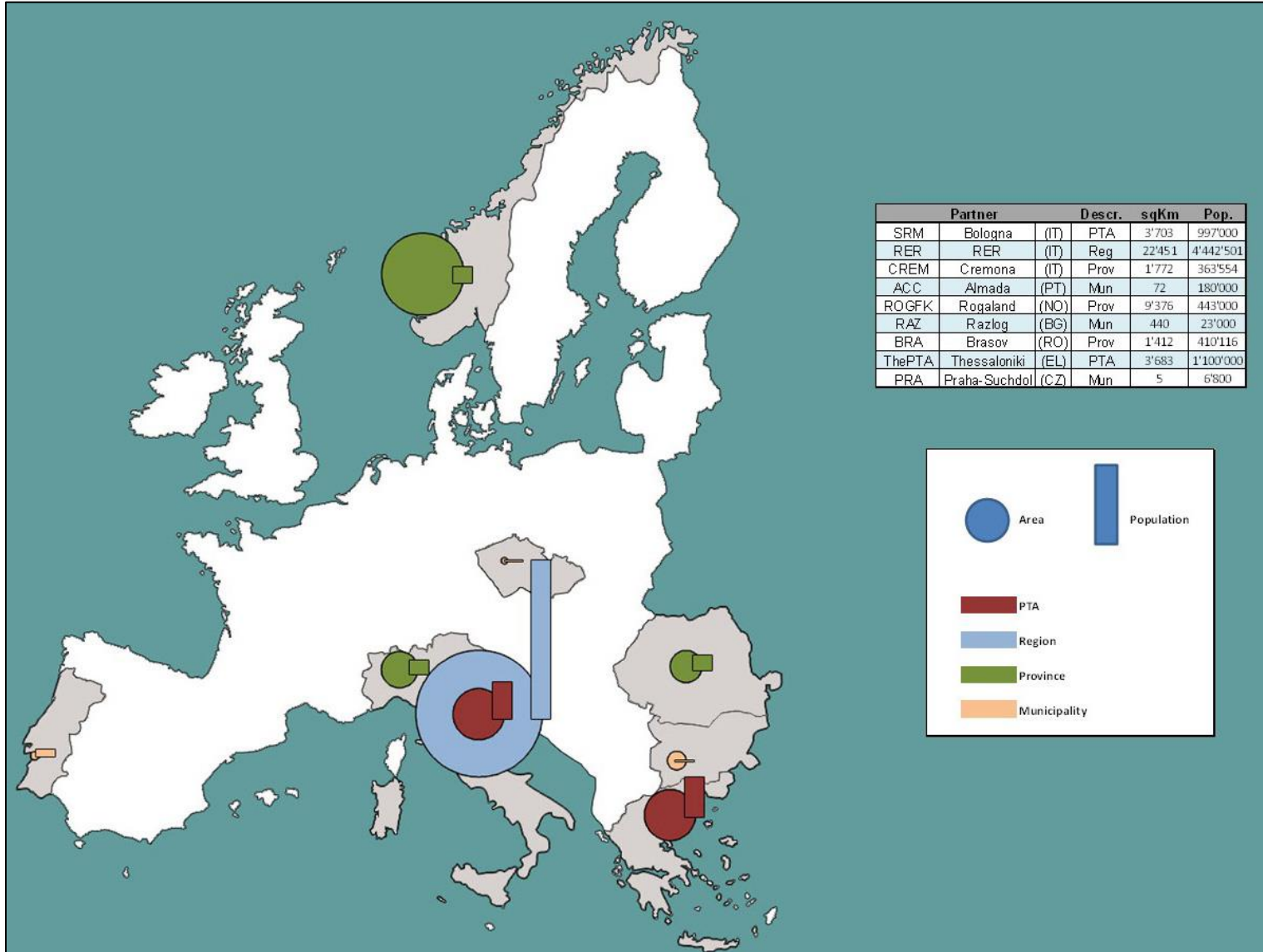
As Transport Authorities or what ...

- 1 – **general overview** (description, dimension);
- 2 – **“conventional” PT** (bus, tramway, metro, train, ...);
- 3 – **“complementary” PT** (taxi, limo, car/bike-sharing, parking, ...);
- 4 – **pillars** (“proximity”) ...

(March, 23th - May, 9th)

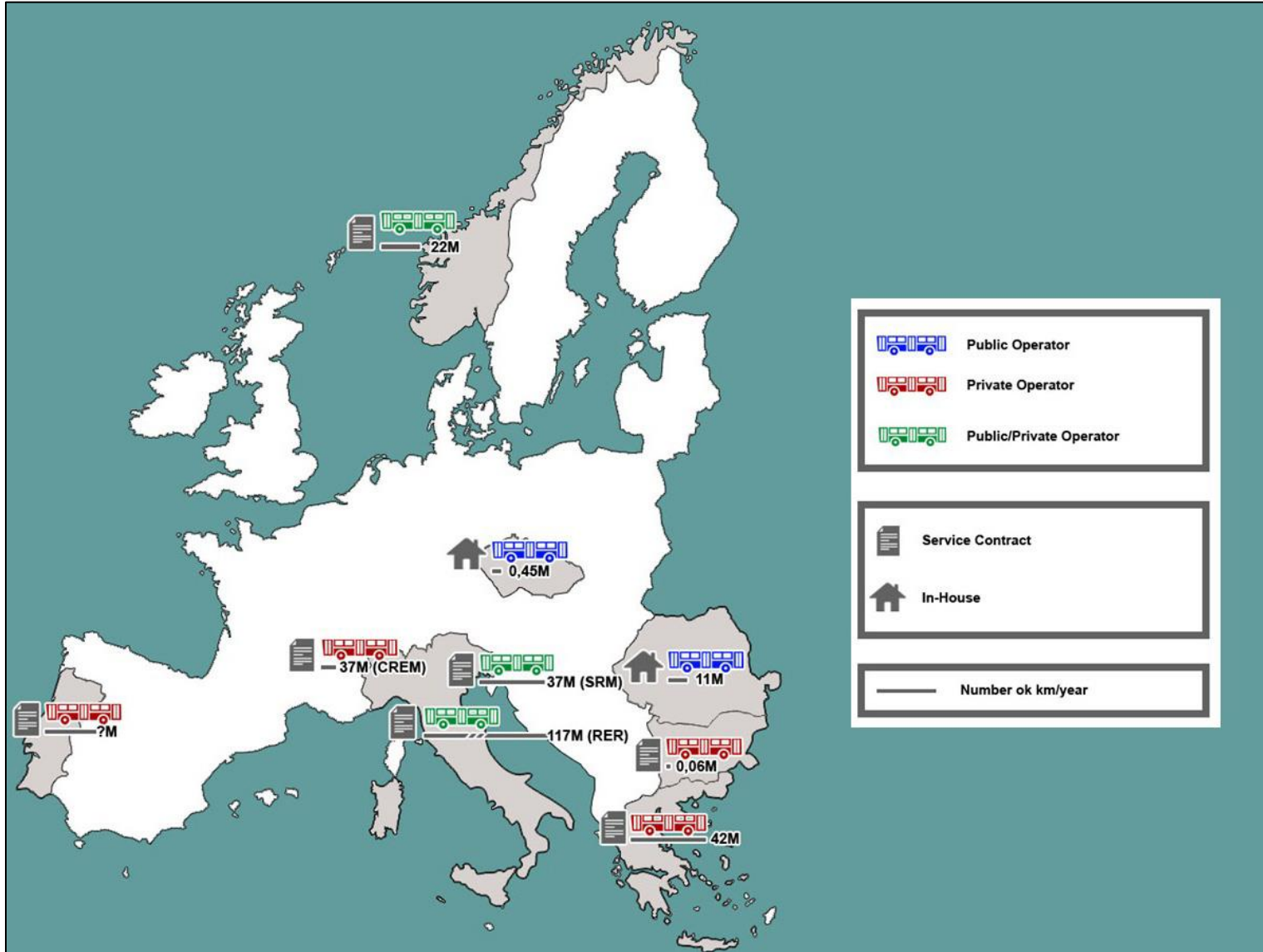
Goal n. 2: conclusions about potential Feasability Studies.

(ACC, BRA, CREM, PRA, RAZ, ROGFK, SRM, ThePTA)



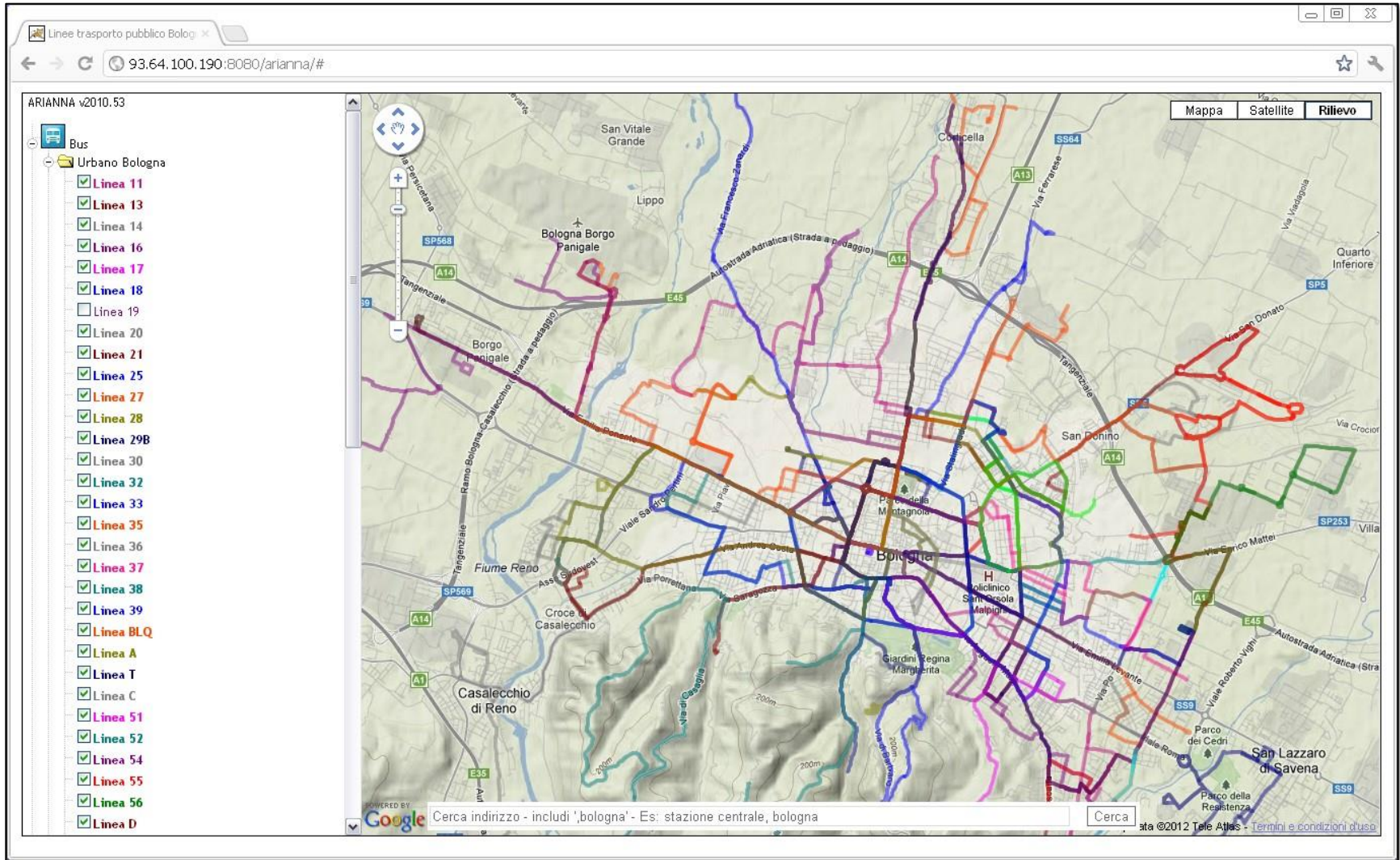
General overview.

Feedback from the EP7A Position survey.



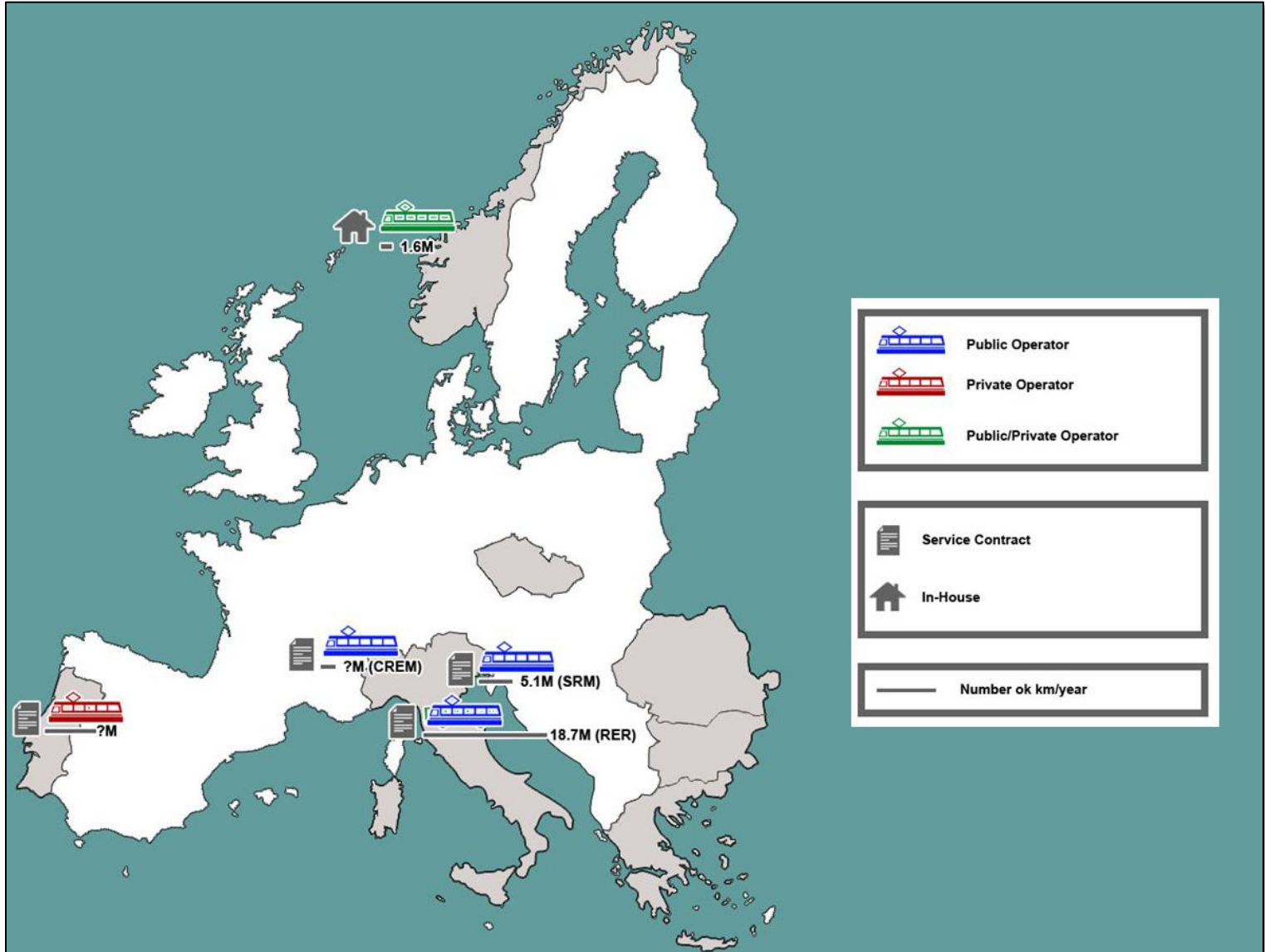
PT by bus.

Feedback from the EP7A Position survey.

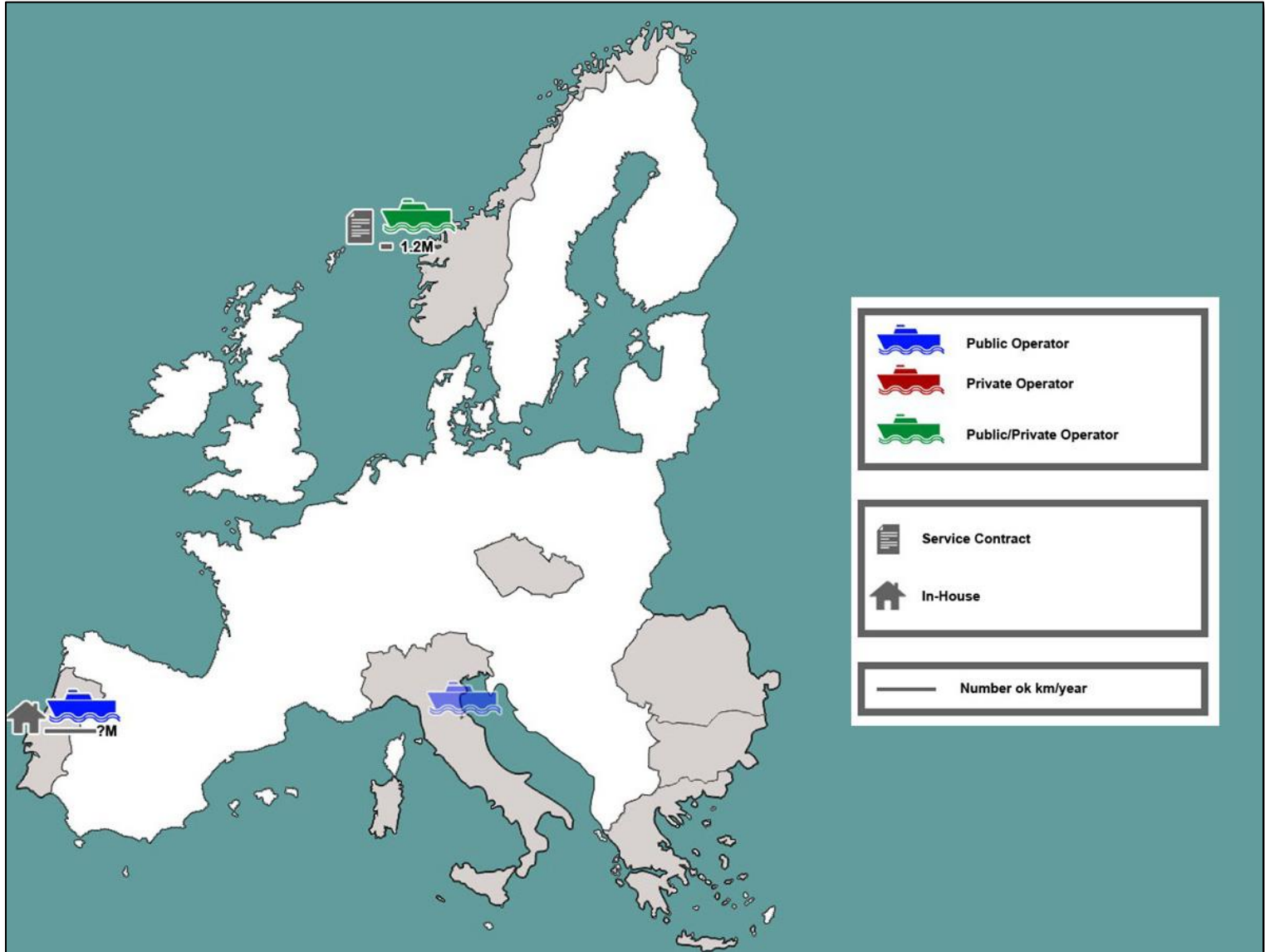


PT by bus (eg).

Feedback from the EP7A Position survey.

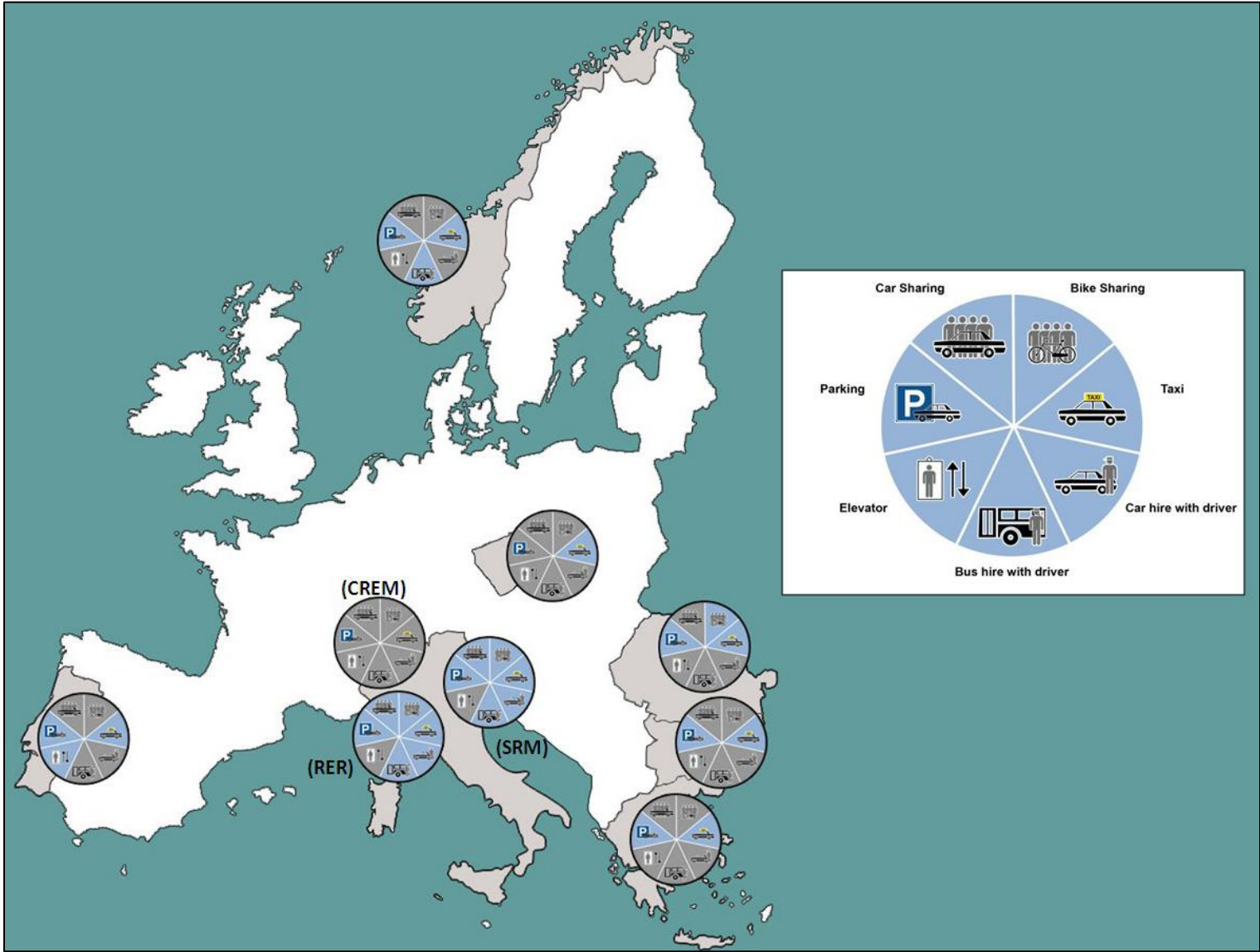


PT by train.

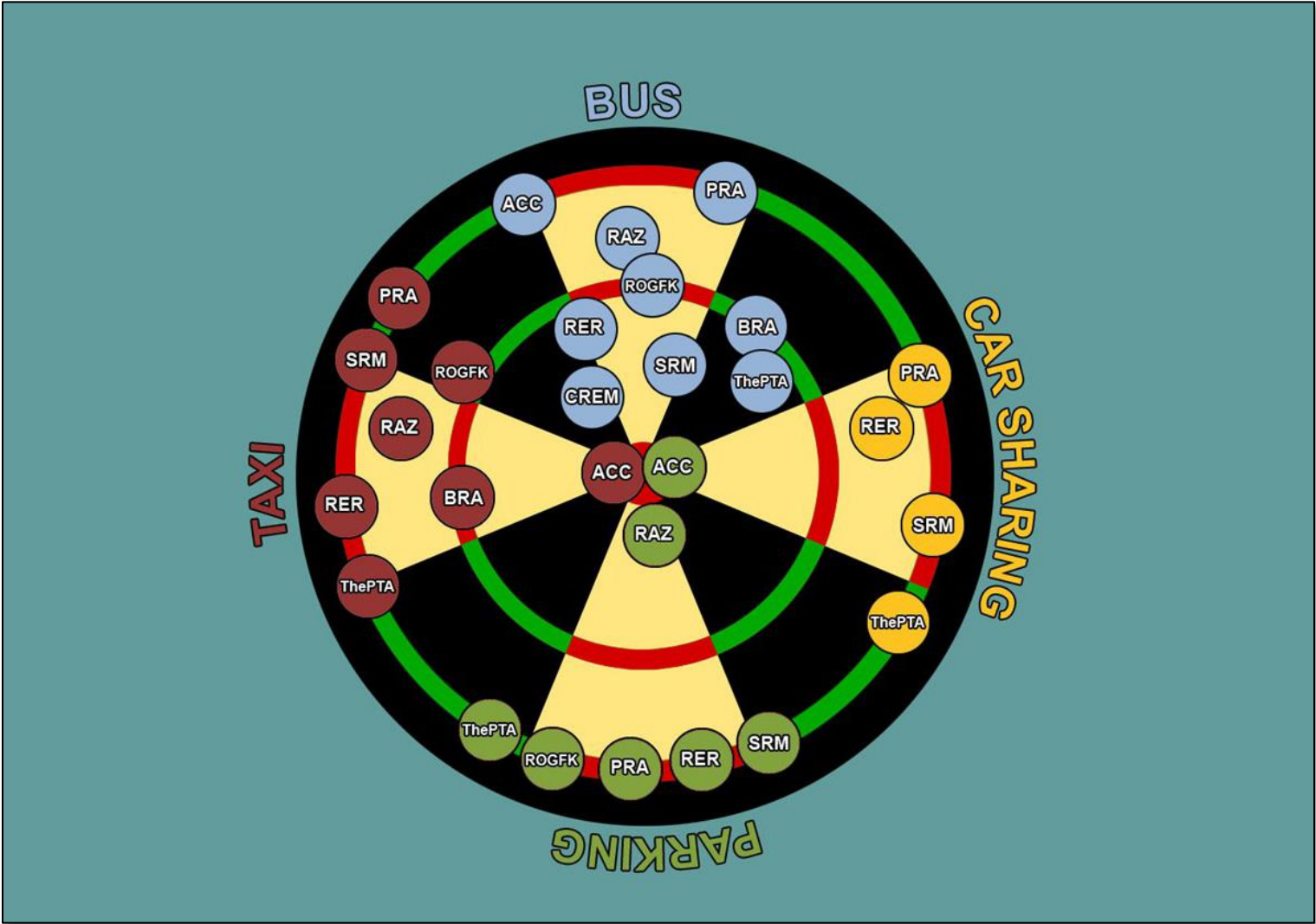


PT by ferry.

Feedback from the EP7A Position survey.



Complementary PT.



“proximity index”.



First conclusions ...

Big/useful diversity among partners,
Motivation from confrontation – if well organised.

Feasibility and collaboration to get more stability and/or
growing up in the Authority role/skills.

Conventional and complementary are interesting the
same way, for Feasibility Studies.

Anyway, useful website, newsletter, house organ,
meetings, workshops, ...

Cooperation/exchange between similar partners or
opposite partners.